

Safeguarding & Child Protection Policy

This policy is informed by Keeping Children Safe in Education (KCSiE) September 2021 and includes statutory guidance, across 4 local authorities, which academies must have regard to.

Document Control

Version Number:	15
Applicable To:	All Academies
Committee:	CMAT Valuing People - Pupils
Recommended By Executive in:	September 2021
Approved by Trust Board:	9 th September 2021 (subject to ratification)
Review Cycle:	Annual
Date of Next Review:	September 2022
Related Policies:	Anti-bullying policy Attendance policy (including Children Missing Education) Behaviour policy Complaints policy Critical Incident plan Equality policy First Aid policy Health and Safety policy Intimate Care policy Lone Working policy Online Safety and Acceptable Use policy Physical Intervention and/or Use of Reasonable Force policy Protocol for children not collected from school at the end of the school day/activity Safer Recruitment policy Staff Code of Conduct/Safer Working Practice Staff Discipline and Grievance procedures Supporting Pupils with Medical Conditions policy Whistleblowing policy
Related Documents:	Keeping Children Safe in Education (KCSiE): Sept 2021 Guidance for Safer Working Practice for those working with children and young people in education settings” (May 2019) Guidance from Cambridgeshire Authority: Record Keeping Guidance to take account of GDPR: Sept 2018 Record Keeping Guidance from Cambridgeshire Authority (GDPR): Sept 2018 Working Together to Safeguard Children: July 2018 Disqualification under the Childcare Act 2006: statutory guidance for local authorities, maintained schools, academies and free schools” (July 2018) Information sharing: Advice for practitioners providing safeguarding services to children, young people, parents and carers: July 2018 Sexual violence and sexual harassment between children in schools and colleges September 2021 Multi-agency statutory guidance on female genital mutilation: April 2016

	<p>Advice for practitioners: March 2015</p> <p>The Prevent Duty, Departmental advice for schools and childcare providers June 2015</p> <p>Revised Prevent Duty Guidance for England and Wales: July 2015</p> <p>Education Child Protection Record Keeping Guidance</p> <p>Guidance for Safer Working Practice for Adults who work with Children and Young People in Education Settings: Oct 2015</p> <p>What to do if you're worried a child is being abused: Advice for practitioners" Mar 2015</p> <p>Sexting in schools and colleges: Responding to incidents and safeguarding young people" published by the UK Council for Child Internet Safety (UKCCIS) – (September 2016)</p> <p>Sharing nudes and semi-nudes: advice for education settings working with children and young people (UKCIS, December 2020)</p>
--	--

Contents page

REF	DESCRIPTION	PAGE
1	Introduction	4
2	Main Elements of the Policy	4
2.1	Prevention	5
2.2	Procedures	6-11
3	Supporting children	11-17
4	Preventing unsuitable people from working with children	17-19
5	Other related policies and guidance	19
6	Academy Council responsibilities	20
Appendix A	Four Categories of Abuse	21-22
Appendix B	Managing an Allegation Against a Member of Staff, Supply staff or Volunteer in your Establishment	23
Appendix C	Actions where there are concerns about a child (KCSiE 2020)	24
Appendix D	What to do if you are worried a child is being abused	25
Appendix E	Useful Contacts: External includes Peterborough, Cambridgeshire, Lincolnshire, Northamptonshire, Bedfordshire	26-27
Academy Specific Information	Key Information for Primary Academies	28-30
	Key Information for Secondary Academies	31-35
	Key Information for Special Schools	36

I Introduction

The academy fully recognises the responsibility it has under section 175 (*Section 157 for Independent Schools and Academies*) of the Education Act 2002, the *Non-Maintained Special Schools (England) Regulations 2015*, and the *Education and Training (Welfare of Children) Act 2021*, to have arrangements in place to safeguard and promote the welfare of children.

This policy sets out how the Academy Council discharges its statutory responsibilities relating to safeguarding and promoting the welfare of children who are pupils at the academy. Our policy applies to all staff, paid and unpaid, working in the academy including Academy Councilors. Teaching assistants, mid-day supervisors, office staff as well as teachers can be the first point of disclosure for a child. Concerned parents/carers may also contact the academy and its Academy Councilors.

It is consistent with the Safeguarding Children Partnership Board procedures.

This policy reflects the *Bedfordshire*, Northamptonshire, Cambridgeshire, Lincolnshire and Peterborough Safeguarding Children Boards, Child Protection Procedures and “Keeping Children Safe in Education” *September 2021*. All staff must be made aware of their duties and responsibilities under part one of this document (set out below).

Staff should read the above document together with ‘Annex B’ of ‘Keeping Children Safe in Education’, 2021 and ‘What to do if you’re worried a child is being abused: Advice for practitioners’ (March 2015) if they are working directly with children. For those staff who do not work directly with children or where English is a second language, Annex A can be issued instead but this is a matter for the academy to decide.

Through their day-to-day contact with pupils and direct work with families all staff in academy have a responsibility to:

- Identify concerns early to prevent them from escalating
- Provide a safe environment in which children can learn
- Identify children who may benefit from early help
- Know what to do if a child tells them he/she is being abused or neglected
- Follow the referral process if they have a concern

2 Main Elements of the Policy

There are four main elements to our policy:

PREVENTION through the teaching and pastoral support offered to pupils and the creation and maintenance of a whole academy protective ethos

PROCEDURES for identifying and reporting cases, or suspected cases, of abuse. The definitions of the four categories of abuse are detailed in Appendix A

SUPPORTING CHILDREN particularly those who may have been abused or witnessed violence towards others.

PREVENTING UNSUITABLE PEOPLE WORKING WITH CHILDREN and SAFER RECRUITMENT processes are followed to ensure that those who are unsuitable to work with children are not employed.

This Policy is available on request and on the CMAT website; personalised Policies for each Academy may be found locally on each Academy website.

2.1 PREVENTION

We recognise that high self-esteem, confidence, supportive friends and good lines of communication with a trusted adult help to protect children.

The academy will therefore:

- 2.1.1 establish and maintain an environment where children feel safe in both the real and the virtual world, including in a digital context and are encouraged to talk and are listened to
- 2.1.2 ensure children know that there are adults in the academy whom they can approach if they are worried or in difficulty and their concerns will be taken seriously and acted upon as appropriate

For Primary/Special Schools:

Incorporate into the curriculum, activities and opportunities which equip children with the skills they need to stay safer from abuse in all contexts, including:

- How to recognise if family relationships are making them feel unhappy or unsafe and how to seek help or advice from others if needed.
- How to recognise who to trust and who not to trust, how to judge when a friendship is making them feel unhappy or uncomfortable...and how to seek help or advice from others, if needed.
- The importance of permission-seeking and giving in relationships with friends, peers and adults.
- That some people behave differently online, including by pretending to be someone they are not.
- The rules and principles for keeping safe online, how to recognise risks, harmful context and contact and how to report them.
- How to critically consider their online friendships and sources of information including awareness of the risks associated with people they have never met.
- About the concept of privacy and the implications of it for both children and adults; including that it is not always right to keep secrets if they relate to being safe.
- That each person's body belongs to them, and the differences between appropriate and inappropriate or unsafe physical, and other, contact.
- How to respond safely and appropriately to adults they may encounter (in all contexts, including online) whom they do not know.
- How to recognise and report feelings of being unsafe or feeling bad about any adult.
- How to ask for advice or help for themselves or others, and to keep trying until they are heard.
- How to report concerns or abuse, and the vocabulary and confidence needed to do so.
- Where to get advice e.g. family, school and/or other sources.

For Secondary Schools:

Incorporate into the curriculum, activities and opportunities which equip children with the skills they need to stay safer from abuse in all contexts, including:

- How to determine whether other children, adults or sources of information are trustworthy, judge when a family, friend, intimate or other relationship is unsafe and how to seek help or advice.
- The characteristics of positive and healthy friendships
- That some types of behaviour within relationships are criminal, including violent behaviour and coercive control
- What constitutes sexual harassment and sexual violence and why these are always unacceptable
- About online risks, including that any material someone provides has the potential to be shared online and the difficulty of removed potentially compromising material placed online
- What to do and where to get support to report material or manage issues online
- The impact of viewing harmful content
- That specifically explicit material e.g. pornography presents a distorted picture of sexual behaviours, can damage the way people see themselves in relation to others and negatively affect how they behave towards sexual partners.
- That sharing and viewing indecent images of children (including those created by children) is a criminal offence which carries severe penalties including jail

- The concepts of, and laws relating to, sexual consent, sexual exploitation, abuse, grooming, coercion, **control**, harassment, rape, domestic abuse, forced marriage, honour-based **abuse** and FGM and how they can affect current and future relationships.
- How people can actively communicate and recognise consent from others, including sexual consent and how and when that can be withdrawn (in all contexts including online).

2.1.3 Include in the curriculum material which will help children develop realistic attitudes to the responsibilities of adult life, particularly with regard to child care and parenting skills

2.1.4 We use PSHE education in our primary **and special** academies- Healthy and Safer Lifestyles Unit from the Cambridgeshire PSHE Service Personal Development Programme. This Unit reinforces essential skills for every child. Self-esteem and confidence building, thinking independently and making assessments of risk based on their own judgements are encouraged throughout the Unit. In addition, all academies follow Relationship Education statutory guidance, which came into effect September 2020.

2.1.5 **Some of our secondary Academies use the Safer Corridors Toolkit. This was developed by the Cambridgeshire PHSE Service which supports schools and colleges in preventing and reducing sexual violence and harassment and responding to incidents.**

2.2 PROCEDURES: Academy specific contacts are detailed at the end of this Policy

2.2.1 We will follow:

We will follow: The procedures set out in the **Cambridgeshire and Peterborough** Safeguarding Children Partnership Board 'Inter-Agency Procedures'. A copy of these procedures can be found on their website: <http://www.safeguardingcambspeterborough.org.uk/children-board/>

Or

The procedures set out in the **Lincolnshire** Safeguarding Children Board "Policies and Procedures manual" A copy of these procedures can be found on the LSCB website <https://www.lincolnshire.gov.uk/LSCB>

OR

The procedures set out in the **Northamptonshire** Safeguarding Children Partnership "Policies and Procedures manual" A copy of these procedures can be found on the NSCP website <http://www.northamptonshirescb.org.uk/about-northamptonshire-safeguarding-children-partnership/policies/>

OR

The procedures set out in the **Bedfordshire** Safeguarding Children Board "Forms & Guidance" A copy of these can be found on the CBSCB website <https://www.centralbedfordshirelscb.org.uk/lscb-website/forms-and-guidance/forms-and-guidance>

2.2.2 Academy Councils, proprietors and management committees will appoint a senior member of staff, from the leadership team, to the role of Designated Safeguarding Lead (DSL). The DSL should take lead responsibility for safeguarding and child protection.

2.2.2 The DSL should have the appropriate status and authority within the academy to carry out the duties of the post. They should be given the time, funding, training, resources and support to provide advice and support to other staff on child welfare and child protection matters (See 'Keeping Children Safe in Education, 2021, Annex C).

2.2.3 The activities of the DSL can be delegated to appropriately-trained deputies (Deputy Designated Safeguarding Lead; DDSL).

- 2.2.4 The lead responsibility for **safeguarding and** child protection remains with the DSL and cannot be delegated.
- 2.2.5 The role of DSL and DDSL is explicit in the post holder's job description
- 2.2.6 The DSL and DDSL should undergo the two-day training provided by the Education Child Protection Service. This training should be updated **at least every two years**.
- 2.2.7 In addition to the formal training set out above the DSL and DDSL should refresh their knowledge and skills e.g. via bulletins, meetings or further reading at **least annually**.
- 2.2.8 Academy Councils should also ensure that every member of staff, paid and unpaid, and the Academy Council knows who the Designated Personnel are and the procedures for passing on concerns from the **point of induction**. In most of the academies this involves the use of reporting concerns via My Concern, some schools use a paper based system to manage referrals.
- 2.2.9 Keeping Children Safe in Education states "During term time the designated safeguarding lead (Or a deputy) should always be available (during academy hours) for staff to discuss any safeguarding concerns. Whilst generally speaking the designated safeguarding lead (or deputy) would be expected to be available in person, it is a matter for an individual academy and colleges to define what "available" means". In the rare event that neither the DSL or DDSL are available; **Keeping Children Safe in Education 2021, page 17, paragraph 5, states: "this should not delay appropriate action being taken"**.
- 2.2.10 Liaise with the three safeguarding partners (Local Authority, clinical commissioning group and police) as appropriate and work with other agencies in line with Working Together to Safeguard Children, 2018
- 2.2.11 Academy Councils should ensure that DSLs and DDSL take advice from a child protection specialist when managing complex cases. The Designated Personnel have access to both the Advice Line run by the Education Child Protection Service and Children's Social Care. The Emergency Duty Team (out of hours) is also available.
- 2.2.12 Academy Councils should nominate Governor / Councilor for safeguarding and child protection who has undertaken appropriate training.
- 2.2.13 Academy Councils should ensure every member of staff and every Councilor knows:
- the name of the designated safeguarding leads, and deputies, and their role
 - how to identify the signs of abuse and neglect
 - how to pass on and record concerns about a pupil
 - that they have an individual responsibility to be alert to the signs and indicators of abuse and for referring **safeguarding** concerns to the DSL/ DDSL
 - that they have a responsibility to provide a safe environment in which children can learn
 - where to find the Inter – Agency Procedures on the Safeguarding Children's Partnership Board website
 - their role in the early help process;
 - the process for making referrals to children's social care.
 - **The safeguarding response to children who go missing in education**
- 2.2.14 Academy Councils should ensure that all staff members undergo safeguarding and child protection training at induction. The training should be regularly updated.
In addition, all staff members should receive regular safeguarding and child protection updates as required **but at least annually**.
- 2.2.15 Academy Councils should ensure that all staff, paid and unpaid, recognise their duty and feel able to raise concerns about poor or unsafe practice in regard to children and that such concerns are addressed sensitively and effectively in a timely manner in accordance with agreed whistle-blowing policies.

- 2.2.16 Academy Councils should ensure that parents are informed of the responsibility placed on the academy and staff in relation to child protection by setting out these duties on the academy website.
- 2.2.17 Academy Councils should ensure that this policy is available publicly via the academy website or by other means.
- 2.2.18 Promote educational outcomes by sharing information about the welfare, safeguarding and child protection issues that children, **including those who have / had a social worker**, are experiencing/have experienced with teachers and school and leadership staff.
- 2.2.19 Where pupils are educated off site or in alternative provision, the academy and the provider have clear procedures about managing safeguarding concerns between the two agencies. Written confirmation that the alternative provider has carried out appropriate safeguarding checks on individuals working at the establishment will be sought by the academy.
- 2.2.20 The academy should be able to demonstrate the robustness of these procedures on request and during CMAT audit regarding alternative or off site provision.**

2.3 Liaison with Other Agencies

The academy will:

- 2.3.1 Work to develop effective links with relevant services to promote the safety and welfare of all pupils
- 2.3.2 Co-operate as required, in line with Working Together to Safeguard Children July 2018, with key agencies in their enquiries regarding child protection matters including attendance and providing written reports at child protection conferences and core groups
- 2.3.3 Notify the relevant Social Care Unit immediately if:
- it should have to exclude a pupil who is subject to a Child Protection Plan (whether fixed term or permanently);
 - there is an unexplained absence of a pupil who is subject to a Child Protection Plan
 - there is any change in circumstances to a pupil who is subject to a Child Protection Plan
- 2.3.4 When a pupil who is subject to a child protection plan leaves, information will be transferred to the new school immediately. The Child Protection Chair and Social Work Unit will also be informed.

Please also refer to the Covid guidance attached as an Appendix to this policy for the actions schools should take to safeguard vulnerable children in liaison with children's social care.

2.4 Record Keeping

The academy will:

- 2.4.1 Keep clear, detailed, accurate, written records of concerns about children (noting the date, event and action taken), even where there is no need to refer the matter to Social Care immediately
- 2.4.2 All concerns, discussions and decisions made, and the reasons for those decisions, should be recorded in writing. It is good practice to keep concerns and referrals in a separate safeguarding file for each child.**
- 2.4.3 Records should include:**
- **a clear and comprehensive summary of the concern;**
 - **details of how the concern was followed up and resolved;**
 - **a note of any action taken, decisions reached and the outcome.**

2.4.4 Some Academies within CMAT use hardcopy safeguarding files which should be kept confidential and stored securely. The vast majority of CMAT secondary and special Academies utilise electronic records which are stored on an identified, purpose-built, secure platform (e.g. MyConcern or CPOMS).

2.4.3 Ensure all relevant **safeguarding** records are sent to the receiving school or establishment when a pupil moves schools in accordance with 'Keeping Children Safe in Education' (September 2021) (page 148) and the **Education Safeguarding Team's Guidance on Keeping and Managing Child Safeguarding Records**. The DSL will consider whether it would be appropriate to share information with the new school/college in advance of a child leaving.

2.4.4 Make parents aware that such records exist except where to do so would place the child at risk of harm.

2.4.5 Ensure all actions and decisions will be led by what is considered to be in the best interests of the child.

2.5 Confidentiality and Information Sharing

2.5.1 Information about children and their families is defined as 'special category data', i.e. information that identifies a living individual. Collection, storage and sharing of personal data is governed by the UK General Data Protection Regulations (UK GDPR) and the Data Protection Act 2018.

The academy will:

2.5.2 Ensure staff and volunteers adhere to confidentiality protocols and that information is shared appropriately.

2.5.3 Ensure staff are aware that they have a professional responsibility to share information with other agencies in order to safeguard children, (as set out in 'Information sharing; Advice for practitioners providing safeguarding services to children, young people, parents and carers,' DfE, July 2018).

2.5.4 Ensure that if a member of staff receives a Subject Access Request (under the Data Protection Act 2018) from a pupil or parent they will refer the request to the DSL or Headteacher.

2.5.5 Ensure staff are clear with children that they cannot promise to keep secrets.

The Designated Safeguarding Lead/Deputies will:

2.5.6 Disclose information about a pupil to other members of staff on a 'need to know' basis. Parental consent may be required.

2.5.7 Aim to gain consent to share information and be mindful of situations where to do so would place a child at increased risk of harm. Information may be shared without consent if a person believes that there is good reason to do so, and that the sharing of information will enhance the safeguarding of a child in a timely manner.

2.5.8 Record when decisions are made to share or withhold information, who information has been shared with and why. (See 'Working Together to Safeguard Children,' July 2018)

2.5.9 In cases where the 'serious harm test' is met, schools must withhold providing the data in compliance with schools' obligations under the Data Protection Act 2018 and the UK GDPR. Where in doubt schools should seek independent legal advice.

2.5.10 Seek advice about confidentiality from outside agencies if required. (See 'Information sharing; Advice for practitioners providing safeguarding services to children, young people, parents and carers,' DfE, July 2018).

2.6 Communication with Parents/Carers

The academy will:

- 2.6.1 Ensure that parents/carers are informed of the responsibility placed on the academy and staff in relation to child protection by setting out its duties in the academy prospectus/website.
- 2.6.2 Undertake appropriate discussion with parents/carers prior to involvement of another agency unless the circumstances preclude this action.
- 2.6.3 If the academy believes that notifying parents could increase the **immediate** risk of harm to the child or **prejudice the prevention or detection of crime**, advice will be sought from Social Care. [Further guidance on this can be found in the Inter-Agency Procedures of the Safeguarding Children Partnership Board].
- 2.6.4 Particular circumstances where parents **may not** be informed include any disclosure of sexual abuse or physical abuse where the child has an injury or where it may lead to the loss of evidence.
- 2.6.5 Record what discussions have taken place with parents on the Log of Concern about a Child's Welfare or if a decision has been made not to discuss it with parents, record the reasons why. Records may subsequently be disclosable to relevant partner agencies if Child Protection proceedings commence, (see 2.6.1)

2.7 Prevention of Peer on Peer Abuse

We recognise that peer on peer abuse can manifest itself in many ways. **This can include but is not limited to: bullying (including cyberbullying, prejudice-based and discriminatory bullying); abuse within intimate partner relationships; physical abuse such as hitting, kicking, shaking, biting, hair pulling, or otherwise causing physical harm; sexual violence and sexual harassment; consensual and non-consensual sharing of nudes and semi-nudes images and/or videos; causing someone to engage in sexual activity without consent, such as forcing someone to strip, touch themselves sexually, or to engage in sexual activity with a third party; upskirting part of the Voyeurism (Offences) Act, April 2019) and initiation/hazing type violence and rituals. Addressing inappropriate behaviour (even if it appears to be relatively innocuous) can be an important intervention that helps prevent problematic, abusive and/or violent behaviour in the future.**

All forms of peer on peer abuse are unacceptable and will be taken seriously.

The academy will therefore:

- 2.7.1 Create a whole school protective ethos in which peer on peer abuse, including sexual violence and sexual harassment will not be tolerated. Victims will be appropriately supported; any indication that a child has suffered from peer on peer abuse will be dealt with under the child protection procedures outlined in this policy.
- 2.7.2 Provide training for staff about recognising and responding to peer on peer abuse, including raising awareness of the gendered nature of peer abuse, with girls more likely to be victims and boys perpetrators. Consideration will always need to be given to the welfare of both the victim(s) and perpetrator(s) in these situations.
- 2.7.3 Ensure that staff do not dismiss instances of peer on peer abuse, including sexual violence and sexual harassment as an inevitable part of growing up.
- 2.7.4 Include within the curriculum, information and materials that support children in keeping themselves safe from abuse, including abuse from their peers and online.
- 2.7.5 Provide high quality Relationship and Sex Education (RSE), **and / or enrichment programmes**, including teaching about consent. Additional guidance on sexting can be found in 'Sexting' in schools: advice and support around self-generated images - What to do and how to handle it, published by CEOP.
- 2.7.6 Ensure that staff members follow the procedures outlined in this policy when they become aware of peer on peer abuse.
- 2.7.7 Staff should be aware that some groups are potentially more at risk. Evidence shows girls, children with special educational needs and disabilities (SEND) and LGBT children are at greater risk.**

2.8 Dealing with Sexual Violence and Sexual Harassment between children

Sexual violence and sexual harassment can occur between two children of any age and sex from primary to secondary stage and into colleges. It can also occur online. It can also occur through a group of children sexually assaulting or sexually harassing a single child or group of children.

Children who are victims of sexual violence and sexual harassment will likely find the experience stressful and distressing. This will, in all likelihood, adversely affect their educational attainment and will be exacerbated if the alleged perpetrator(s) attends the same school or college. Sexual violence and sexual harassment exist on a continuum and may overlap, they can occur online and face to face (both physically and verbally) and are never acceptable.

The academy will:

- 2.8.1 Be clear that sexual violence and sexual harassment will not be tolerated.
- 2.8.2 Provide training for staff on how to manage a report of sexual violence or sexual harassment.
- 2.8.3 Make decisions on a case-by-case basis.
- 2.8.4 Reassure victims that they are being taken seriously, offer appropriate support and take the wishes of the victim into account when decision making.
- 2.8.5 Implement measures to keep the victim, alleged perpetrator and if necessary other children and staff members, safe. Record any risk assessments and keep them under review.
- 2.8.6 Give consideration to the welfare of both the victim(s) and perpetrator(s) in these situations.
- 2.8.7 Liaise closely with external agencies, including police and social care, when required.
- 2.8.8 Refer to 'Keeping Children Safe in Education - Part Five', 2021, 'Sexual violence and sexual harassment between children in schools and colleges,' (DfE, September, 2021) for full details of procedures to be followed in such cases. Also see 'Sharing nudes and semi-nudes: advice for education settings working with children and young people' (UKCIS, December 2020)

3.0 SUPPORTING CHILDREN

We recognise that any child may be subject to abuse and neglect, and that mental health problems can, in some cases, be an indicator that a child has suffered or is at risk of suffering abuse, neglect or exploitation; or by witnessing violence may have an adverse impact on those children which may last into adulthood without appropriate intervention and support. The Academy will support all children by:

- 3.1 Recognising the academy may be the only stable, secure and predictable element in the lives of children at risk. Nevertheless, when at school their behaviour may be challenging and defiant or they may become withdrawn.
- 3.2 Recognising that some vulnerable children may develop abusive behaviours and that these children may need to be referred on for appropriate support and intervention.
- 3.3 Providing curricular opportunities to encourage self-esteem and self-motivation
- 3.4 Creating an ethos that actively promotes a positive, supportive and safe environment and values the whole community.
- 3.5 Applying the academy's behaviour policy effectively to support vulnerable pupils in the academy. All staff will agree on a consistent approach, which focuses on the behaviour of the child but does not damage the pupil's

sense of self worth. The academy will ensure that the pupil knows that some behaviour is unacceptable but s/he is valued and not to be blamed for any abuse which has occurred.

- 3.6 Liaise with the senior mental health lead where safeguarding concerns are linked to mental health in school/college for advice on case management.
- 3.7 Liaising with other agencies which support the pupil such as Social Care, Child and Adolescent Mental Health Services, Cambridgeshire / Lincolnshire Sexual Behaviour Service, Addiction or Locality or Early Help Teams.
- 3.8 Promoting supportive engagement with parents and/or carers in safeguarding and promoting the welfare of children, including where families may be facing challenging circumstances
- 3.9 The academy recognises that whilst **any** child may benefit from early help, staff are encouraged to consider the wider environmental factors present in a child's life which could pose a threat to their welfare or safety, (contextual safeguarding). Staff are required to be particularly alert to the potential need for early help for children in particular circumstances. Please see pages 8 – 9 of Keeping Children Safe in Education, 2021 for the complete list. The list includes:

3.1 Children with Disabilities, Additional Needs or Special Educational Needs

- 3.1.1 Our SEND policy is set out in a separate document. Published in 2009, 'Safeguarding disabled children: practice guidance' is an important part of the guidance for everyone involved in safeguarding. We recognise that Children with special educational needs and/or disabilities are at higher risk of harm than most children, yet keeping them safe can be more of a challenge. Academy staff who deal with children with profound and multiple disabilities, cerebral palsy, sensory impairment and/or emotional and behaviour problems, especially those with communication difficulties are particularly sensitive to signs of abuse. Where children have significant communication difficulties staff will ensure that opportunities for communication, in any form, are given by skilled staff.
- 3.1.2 We recognise that, statistically, children with additional needs, special educational needs, emotional and behavioural difficulties and disabilities are most vulnerable to abuse. Academy staff who deal with children with complex and multiple disabilities and/or emotional and behavioural problems should be particularly sensitive to indicators of abuse.
- 3.1.3 The academy has pupils with emotional and behavioural difficulties and/or challenging behaviours. The academy will support staff to decide appropriate strategies that will reduce anxiety for the individual child and raise self-esteem as part of an overall behaviour support plan agreed with parents/carers.
- 3.1.4 As part of the PSHE curriculum staff will teach children personal safety skills commensurate with their age, ability and needs. Children will be taught personal safety skills such as how to recognise if they are feeling unsafe including within family relationships and friendships; how to ask for help; the difference between safe and unsafe secrets; the difference between safe and unsafe physical contact; and how to recognise and manage risk including in a digital context. The content of lessons will be shared with parents/carers so that these skills can be supported at home.
- 3.1.5 The academy has pupils who may have communication difficulties and we are aware that they are vulnerable to abuse because they are unable to express themselves to others. Instead such children will often exhibit changes in behaviours or signs and indicators of abuse recognised by staff with a good knowledge of the child.
- 3.1.6 Where necessary, the academy will provide additional training to staff in the use of Makaton, PECS or other communication systems. Supervision by senior managers will be vigilant to create a protective ethos around the child.
- 3.1.7 We promote high standards of practice, including ensuring that disabled children know how to raise concerns, and have access to a range of adults with whom they can communicate.

- 3.1.8 For Special Schools within CMAT all pupils have an Education, Health and Care Plan and multi-agency planning and involvement to support integrated care.

3.2 Young Carers

- 3.2.1 The academy recognises that children who are living in a home environment which requires them to act as a young carer for a family member or a friend, who is ill, disabled or misuses drugs or alcohol can increase their vulnerability and that they may need additional support and protection.
- 3.2.2 The academy will seek to identify young carers; offer additional support internally; signpost to external agencies; be particularly vigilant to the welfare of young carers and follow the procedures outlined in this policy, referring to Early Help or Social Care as required if concerns arise.

3.3 Children at Risk of Criminal Exploitation

- 3.3.1 Criminal exploitation of children is a form of harm that is a typical feature of county lines activity. Drug networks or gangs exploit children and young people to carry drugs and money from urban areas to suburban and rural areas. Exploitation can occur even if activity appears to be consensual.
- 3.3.2 All staff will consider whether children are at risk of abuse or exploitation in situations outside their families. The academy will address indicators of child criminal exploitation with staff through training. Staff will follow the procedures outlined in this policy if concerns of criminal exploitation arise.
- 3.3.3 The Designated Safeguarding Lead will complete Safeguarding Children Partnership Board's Exploitation (CSE / Criminal/Gangs) Risk Assessment and Management Tool and refer to Social Care if there is a concern that a young person may be at risk of criminal exploitation.
- 3.3.4 The academy recognises that young people who go missing can be at increased risk of child criminal exploitation, **modern slavery** and/or trafficking and has procedures in place to ensure appropriate response to children and young people who go missing, particularly on repeat occasions – (see 3.4).

3.4 Children Frequently Missing Education

- 3.4.1 The academy recognises that children going missing, particularly repeatedly, can act as a warning sign of a range of safeguarding possibilities including abuse, neglect, child sexual exploitation and child criminal exploitation, **modern slavery**, mental health problems, risk of substance abuse, risk of travelling to conflict zones, and risk of FGM or forced marriage.
- 3.4.2 The academy monitors attendance of individual pupils closely, as outlined in the Attendance Policy, and analyses patterns of absence to aid early identification of concerning patterns of absence.
- 3.4.3 The academy endeavours to hold more than one emergency contact for each pupil to provide additional options to make contact with a responsible adult when a child missing education is identified as a welfare and/or safeguarding concern.
- 3.4.4 When a child is missing from education, the academy follows the procedure as set out in Cambridgeshire's / Lincolnshire's / Northamptonshire's / Bedfordshire's Children Missing Education guidance. The academy will inform the Education Welfare Officer and Social Care if a missing child is subject to a Child Protection Plan or there have been ongoing concerns.

3.5 Substance Misuse of Drugs or Alcohol

- 3.5.1 The discovery that a young person is misusing legal or illegal substances or reported evidence of their substance misuse is not necessarily sufficient in itself to initiate child protection proceedings but the academy will consider such action in the following situations:

When there is evidence or reasonable cause:

- to believe the young person's substance misuse may cause him or her to be vulnerable to other abuse such as sexual abuse
- to believe the pupil's substance related behaviour is a result of abuse or because of pressure or incentives from others, particularly adults
- where the misuse is suspected of being linked to parent/carer substance misuse.
- Where the misuse indicates an urgent health or safeguarding concern
- Where the child is perceived to be at risk of harm through any substance associated criminality

3.6 Children living with Substance Misusing Parents/Carers

3.6.1 Misuse of drugs and/or alcohol is strongly associated with Significant Harm to children, especially when combined with other features such as domestic violence.

3.6.2 When the academy receives information about drug and alcohol abuse by a child's parents/carers they will follow appropriate procedures.

3.6.3 This is particularly important if the following factors are present:

- Use of the family resources to finance the parent's dependency, characterised by inadequate food, heat and clothing for the children
- Children exposed to unsuitable caregivers or visitors, e.g. customers or dealers
- The effects of alcohol leading to an inappropriate display of sexual and/or aggressive behaviour
- Chaotic drug and alcohol use leading to emotional unavailability, irrational behaviour and reduced parental vigilance
- Disturbed moods as a result of withdrawal symptoms or dependency
- Unsafe storage of drugs and/or alcohol or injecting equipment
- Drugs and/or alcohol having an adverse impact on the growth and development of the unborn child.

3.7 Children at Risk of Child Sexual Exploitation (CSE)

3.7.1 Child sexual exploitation is a form of child sexual abuse. It occurs where an individual or group takes advantage of an imbalance of power to coerce, manipulate or deceive a child or young person under the age of 18 into sexual activity (a) in exchange for something the victim needs or wants, and/or (b) for the financial advantage or increased status of the perpetrator or facilitator. The victim may have been sexually exploited even if the sexual activity appears consensual. Child sexual exploitation does not always involve physical contact; it can also occur through the use of technology.

3.7.2 Sexual exploitation can take many different forms from the seemingly 'consensual' relationship to serious organised crime involving gangs and groups. **CSE can be a one-off occurrence or a series of incidents over time and range from opportunistic to complex organised abuse. It can involve force and/or enticement-based methods of compliance and may, or may not, be accompanied by violence or threats of violence.**

3.7.3 Potential indicators of sexual exploitation will be addressed within staff training, including raising awareness with staff that some young people who are being sexually exploited do not show any external signs of abuse and may not recognise it as abuse. Staff will follow the procedures outlined in this policy if concerns of child sexual exploitation arise.

3.7.4 The Designated Safeguarding Lead will complete Safeguarding Children Partnership Board's Exploitation (CSE / Criminal/Gangs) Risk Assessment and Management Tool and refer to Social Care if there is a concern that a young person may be at risk of criminal exploitation.

- 3.7.5 The academy recognises that young people who go missing can be at increased risk of sexual exploitation and has procedures in place to ensure appropriate response to children and young people who go missing, particularly on repeat occasions (see 3.4).

3.8 Children Living with Domestic Abuse

- 3.8.1 The Domestic Abuse Act 2021 introduces the first ever statutory definition of domestic abuse and recognises the impact of domestic abuse on children, as victims in their own right, if they see, hear or experience the effects of abuse.
- 3.8.2 All children can witness and be adversely affected by domestic abuse in the context of their home life where domestic abuse occurs between family members. Experiencing domestic abuse and/or violence can have a serious, long lasting emotional and psychological impact on children. In some cases, a child may blame themselves for the abuse or may have had to leave the family home as a result.
- 3.8.3 Young people can also experience domestic abuse within their own intimate relationships. This form of peer on peer abuse is sometimes referred to as 'teenage relationship abuse'. Depending on the age of the young people, this may not be recognised in law under the statutory definition of 'domestic abuse' (if one or both parties are under 16).
- 3.8.4 Domestic Abuse is defined as any incident or pattern of incidents of controlling, coercive or threatening behaviour, violence or abuse between those aged 16 or over who are 'personally connected' regardless of gender or sexuality. This can encompass but is not limited to the following types of abuse: psychological, physical, sexual, financial, and emotional, coercive or controlling behaviour.
- 3.8.5 The academy recognises that where there is Domestic Abuse in a family, the children/young people will always be affected; the longer the violence continues, the greater the risk of significant and enduring harm, which they may carry with them into their adult life and relationships. Domestic Abuse can also affect children in their personal relationships as well as in the context of home life.
- 3.8.6 Staff will follow the procedures outlined in this policy if concerns of Domestic Abuse arise. The academy will vigilantly monitor the welfare of children living in domestic abuse households, offer support to them and contribute to any Multi-Agency Risk Assessment Conference (MARAC) safety plan as required.
- 3.8.7 Each Academy works in partnership with the Police and their local County Council to identify and provide appropriate support to pupils who have experienced domestic abuse in their home. In order to achieve this, the Education Safeguarding Team will share police information of all domestic incidents, where one of our pupils has been present, with the Designated Safeguarding Lead(s) (DSL)/Domestic Abuse (DA) Lead.

On receipt of any information, the DSL/DA Lead will decide on the appropriate support the child may require. Information is stored in line with all other confidential safeguarding and child protection information. All information sharing and resulting actions will be undertaken in accordance with the 'Joint Agency Protocol for Domestic Abuse – Notifications to Schools, Colleges and Early Years settings'.

3.9 Children at risk of 'Honour- Based' Abuse including Female Genital Mutilation

- 3.9.1 So called 'honour-based' abuse (HBA) encompasses incidents which have been committed to protect or defend the honour of the family and/or community, including breast ironing, female genital mutilation (FGM) and forced marriage. The academy takes these concerns seriously and staff are made aware of the possible signs and indicators that may alert them to the possibility of HBA through training. Staff are required to treat all forms of HBA as abuse and follow the procedures outlined in this policy.
- 3.9.2 FGM is a procedure involving the partial or total removal of the external female genitalia or other injury to the female genital organs. FGM is illegal in the UK. Any indication that a child is at risk of FGM, where FGM is suspected, or where the woman is over 18, will be dealt with under the child protection procedures outlined in this policy. Staff will report concerns to the DSL, who will make appropriate and timely referrals to social

care. In these cases, parents will not be informed before seeking advice and the case will still be referred to social care even if it is against the pupil's wishes.

- 3.9.3 In accordance with the Female Genital Mutilation Act, it is a statutory duty for teachers in England and Wales to report 'known' cases of FGM in under-18s which they identify in the course of their professional work to the police. Teachers should still consider and discuss any such case with the DSL and involve social care as appropriate, but the teacher will personally report to the police that an act of FGM appears to have been carried out.

3.10 Children who have returned home to their family from care

The academy recognises that a previously looked after child potentially remains vulnerable. Staff will vigilantly monitor the welfare of previously looked after children, keep records and notify Social Care as soon as there is a recurrence of a concern in accordance with the Local Safeguarding Children Partnership Board 'Inter - Agency Procedures.'

3.11 Children showing signs of Abuse and/or Neglect

- 3.11.1 The academy recognise that experiencing abuse or neglect may have an adverse impact on those children which may last into adulthood without appropriate intervention and support. School may be the only stable, secure and predictable element in the lives of children at risk. Children who have experienced abuse or neglect may display this through their own behaviour, which may be challenging and defiant or passive and withdrawn. We recognise that children may develop abusive behaviours and that these children may need to be referred on for appropriate support and intervention.
- 3.11.2 All staff should be aware that safeguarding incidents and/or behaviours can be associated with factors outside the school or college and/or can occur between children outside of these environments. All staff, but especially the designated safeguarding lead (and deputies) should consider whether children are at risk of abuse or exploitation in situations outside their families. Extra-familial harms take a variety of different forms and children can be vulnerable to multiple harms including (but not limited to) sexual exploitation, criminal exploitation, and serious youth violence.
- 3.11.3 The academy will provide training for staff to ensure that they have the skills to identify and report cases, or suspected cases, of abuse in accordance with the procedures outlined in this policy. The definitions of the four categories of abuse are attached (see Appendix A).

3.12 Children at risk of Radicalisation

- 3.12.1 Children are vulnerable to extremist ideology and radicalisation. Similar to protecting children from other forms of harms and abuse, protecting children from this risk should be a part of a schools' or colleges' safeguarding approach.
- 3.12.2 The academy council will ensure that the DSL has undertaken Prevent awareness training and that all staff receive training about the Prevent Duty.
- 3.12.3 Staff are required to be alert to changes in children's behavior which could indicate they need help or protection. Concerns that a child is at risk of radicalisation are referred to the DSL in the usual way. The school's/college's designated safeguarding lead (and any deputies) should be aware of local procedures for making a Prevent referral.
- 3.12.4 See also 'The Prevent Duty, Departmental advice for schools and childcare providers', DfE (June 2015), and 'Revised Prevent Duty Guidance: for England and Wales,' HM Government, (July 2015).
- 3.12.5 The Academy's internet filtering includes the prevention of access to extremist material in academy.

3.13 Privately Fostered Children

Private fostering is when a child under the age of 16, (under 18 if disabled) is provided with care and accommodation by a person who is not a parent, person with parental responsibility for them or relative in their own home for 28 days or more.

The academy will follow the mandatory duty to inform the local authority of any 'Private Fostering' arrangements and refer to the Specialist Fostering Team.

3.14 Children who have Family Members in Prison

The academy is committed to supporting children and young people who have a parent or close relative in prison and will work with the family to find the best ways of supporting the child.

The academy recognises that children with family members in prison are at risk of poor outcomes including: poverty, stigma, isolation, poor mental health and poor attendance.

The academy will treat information shared by the family in confidence and it will be shared on a 'need to know' basis.

The academy will work with the family and the child to minimise the risk of the child not achieving their full potential.

4 PREVENTING UNSUITABLE PEOPLE FROM WORKING WITH CHILDREN

4.1 The academy will operate safer recruitment practices including ensuring appropriate DBS and reference checks are undertaken according to part 3 of 'Keeping Children Safe in Education' (2021) and the Academy Safer Recruitment Policy.

4.2 The academy council will ensure that at least one of the persons who conducts an interview has completed safer recruitment training. Details of trained staff in each academy can be found at the end of this Policy

4.3 Allegations that may meet the harms threshold (Part Four Section One)

4.3.1 Any allegation of abuse made against a member of staff (including supply staff and volunteers) **that meets the harms threshold as set out in Keeping Children Safe in Education, 2021, Part Four, Section One** will be reported straight away to the Principal.

4.3.2 **In cases where the Principal is the subject of an allegation, it will be reported to the Chair of Academy Council. The academy will follow the procedures set out in Part four of Keeping Children Safe in Education 2021.**

4.3.3 **The academy will consult with the Local Authority Named Senior Officer / Designated Officer (LADO) in the event of an allegation being made against a member of staff, supply staff or volunteer and adhere to the relevant procedures set out in Keeping Children Safe in Education, 2021 and the Trust's HR Policies and seek help from HR personnel if required.**

4.3.4 **The Principal or Chair of the Academy Council will ensure that all allegations are reported to the LADO within one working day. The LADO will advise on all further action to be taken.**

4.3.5 **Before contacting the LADO, schools and colleges should conduct basic enquiries in line with local procedures to establish the facts to help them determine whether there is any foundation to the allegation, being careful not to jeopardise any future police investigation.**

4.3.6 **Where the school or college identify a child has been harmed they should contact children's social care and as appropriate the police immediately.**

4.3.7 **School/college will consider:**

- **Looking after the welfare of the child** - the designated safeguarding lead is responsible for ensuring that the child is not at risk and referring cases of suspected abuse to the local authority children's social care.
- **Investigating and supporting the person subject to the allegation** - the case manager should discuss with the LADO, the nature, content and context of the allegation, and agree a course of action.

4.3.8 The academy will ensure that any disciplinary proceedings against staff, supply staff or volunteers relating to child protection matters are concluded in full even when the member of staff, supply staff or volunteer is no longer employed at the academy and that notification of any concerns is made to the relevant authorities and professional bodies and included in references where applicable.

4.3.9 Staff (including supply staff and volunteers) who are the subject of an allegation have the right to have their case dealt with fairly, quickly, and consistently and to be kept informed of its progress. **Suspension should not be an automatic response when an allegation is reported. However**, in some cases, staff may be suspended where this is deemed to be the best way to ensure that children are protected.

4.4 Concerns that do not meet the harms threshold (Part Four, Section Two)

4.4.1 Low level concerns that do not meet the harms threshold should be reported to the Headteacher/Principal. NB: The term low level does not mean that it is insignificant, it means that the behaviour towards a child does not meet the harms test.

4.4.2 In cases where the Head Teacher or Principal is the subject of an allegation, it will be reported to the Chair of the Academy Council. The school will follow the procedures set out in Part Four of 'Keeping Children Safe in Education', 2021.

4.4.3 The school/college will deal with any such concern, no matter how small, where an adult working in or on behalf of the school or college may have acted in a way that:

- is inconsistent with the staff code of conduct, including inappropriate conduct outside of work; and
- does not meet the allegations threshold or is otherwise not considered serious enough to consider a referral to the LADO.

4.4.4 All low-level concerns should be recorded in writing. The record should include details of the concern, the context in which the concern arose, and action taken. The name of the individual sharing their concerns should also be noted, if the individual wishes to remain anonymous then that should be respected as far as reasonably possible.

4.4.5 Schools and colleges can decide where these records are kept, but they must be kept confidential, held securely and comply with the Data Protection Act 2018 and the UK General Data Protection Regulation (UK GDPR)

4.5 The school will promote an open and transparent culture in which all concerns about all adults working in or on behalf of the school or college (including supply teachers, volunteers and contractors) are dealt with promptly and appropriately. This will enable the school/college to identify concerning, problematic or inappropriate behaviour early; minimise the risk of abuse; and ensure that adults working in or on behalf of the school/college are clear about professional boundaries and act within these boundaries, and in accordance with the ethos and values of the institution.

4.5.1 School/College should ensure that all staff, paid and unpaid, are aware of the need for maintaining appropriate and professional boundaries in their relationships with pupils and parents/carers as advised within the Local Authority's Code of Conduct: 'Guidance for Safer Working Practice for Adults who work with Children and Young People in Education Settings' (May 2019). As part of the Induction process, all staff, paid and unpaid, will receive guidance about how to create appropriate professional boundaries (in both the real and virtual world) with all children, especially those with a disability or who are vulnerable.

- 4.5.2 All staff have signed to confirm that they have, read 'Guidance for Safer Working Practice for Adults who work with Children and Young People in Education Settings' (May 2019).
- 4.5.3 The academy will ensure that staff, supply staff and volunteers are aware that sexual relationships with pupils aged under 18 are unlawful and could result in legal proceedings taken against them under the Sexual Offences Act 2003 (Abuse of Position of Trust).
- 4.5.4 The academy will ensure that communication between pupils and adults, by whatever method, are transparent and take place within clear and explicit professional boundaries and are open to scrutiny.

5.0 OTHER RELATED POLICIES AND GUIDANCE

- Anti -Bullying
- Attendance Policy
- Behaviour Policy
- Complaints procedure
- Critical Incidents Plan
- Equality Duty & related Action Plans
- E-Safety and Acceptable Use Policy
- First Aid Policy
- Health & Safety Policy
- Home Visits Policy
- Intimate Care Policy
- Lone Work Policy
- Physical Intervention and/or the Use of Reasonable Force
- Safer Recruitment Policy
- Staff Code of Conduct / Safer Working Practice
- Staff Discipline & Grievance Policy
- Supporting Pupils with Medical Conditions
- Visitors & Volunteers in Schools Policy
- Whistle-blowing

5.1 Mobile technology guidance

- 5.1.1 Our policy on use of mobile phones, cameras and sharing of images is set out in a separate document and is reviewed annually. It is recognised that personal mobile phones have the potential to be used inappropriately and therefore the Trust has developed a policy to outline the required protocol for all staff, students, volunteers and parents/carers.
- 5.1.2 Cameras and mobile phones are prohibited in all toilet and changing areas. No photographs may be taken on personal mobiles/tablets or for an adult's own records.
- 5.1.3 All staff are aware of safeguarding issues around the use of mobile technologies and their associated risks and will rigorously follow protocols set out in the Acceptable Use Policy (and the Mobile Technology policy in settings with Early Years provision: referring to Section 3 – The Safeguarding and Welfare Requirements of the Statutory Framework for the Early Years Foundation Stage.)

5.2 Extended Schools and Before and After School Activities (on or off site)

- 5.2.1 If the academy provides extended school facilities or before or after school activities directly under the supervision or management of academy staff, the academy's arrangements for safeguarding as written in this policy shall apply.

5.2.2 Where services or activities are provided separately by another body the academy will seek assurance that the body concerned has appropriate policies and procedures in place for safeguarding children and child protection and there are arrangements to liaise with the academy on these matters where appropriate.

6.0 **ACADEMY COUNCIL SAFEGUARDING RESPONSIBILITIES**

Academy Councils should ensure they facilitate a whole school/college approach to safeguarding. This means ensuring safeguarding and child protection are at the forefront and underpin all relevant aspects of process and policy development. Ultimately, all systems, processes and policies should operate with the best interests of the child at their heart.

The Academy Council fully recognises its responsibilities with regard to safeguarding and promoting the welfare of children. It aims to ensure that the policies, procedures and training in school are effective and comply with the law and government guidance at all times. It will:

- Nominate a Governor / Councilor for safeguarding and child protection who will take leadership responsibility for the academy's safeguarding arrangements and practice and champion child protection issues
- Ensure an annual report is made to the full Academy Council, and copied to the Education Child Protection Service. Any weaknesses will be rectified without delay
- Ensure that this Safeguarding and Child Protection policy is annually reviewed and updated and shared with staff. It will be made available on the academy website.
- Ensure that children's exposure to potential risks while using the internet is limited by having in place age appropriate filtering and monitoring systems.
- Ensure children's wishes and feelings are taken into account where there are safeguarding concerns.

Appendix A: Four categories of abuse

Physical Abuse - may involve hitting, shaking, throwing, poisoning, burning or scalding, drowning, suffocating, or otherwise causing physical harm to a child. Physical harm may also be caused when a parent or carer fabricates the symptoms of, or deliberately induces, illness in a child.

Neglect - persistent failure to meet a child's basic physical and/or psychological needs, likely to result in the serious impairment of the child's health or development.

It may occur during pregnancy as a result of maternal substance misuse.

It may involve the neglect of or lack of responsiveness to a child's basic emotional needs.

It also includes parents or carers failing to:

- Provide adequate food, clothing and shelter including exclusion from home or abandonment
- Protect a child from physical and emotional harm or danger
- Ensure adequate supervision including the use of inadequate care-givers
- Ensure access to appropriate medical care or treatment

Emotional Abuse - Is the persistent emotional maltreatment so as to cause severe and adverse effects on a child's emotional development.

It may involve conveying to a child that they are:

- Worthless, Unloved, Inadequate, Valued only insofar as they meet another person's needs

It may include:

- not giving the child opportunities to express their views
- deliberately silencing them
- 'making fun' of what they say or how they communicate

It may also feature age or developmentally inappropriate expectations being imposed on children including:

- interactions that are beyond the child's developmental capability
- overprotection and limitation of exploration and learning
- preventing participation in normal social interaction

It may involve:

- Seeing or hearing the ill-treatment of another
- Serious bullying (including cyberbullying) causing children frequently to feel frightened or in danger
- The exploitation or corruption of children

Some level of emotional abuse is involved in all types of maltreatment although it may occur alone

Sexual Abuse – involves forcing or enticing a child or young person to take part in sexual activities, not necessarily involving a high level of violence, whether or not the child is aware of what is happening.

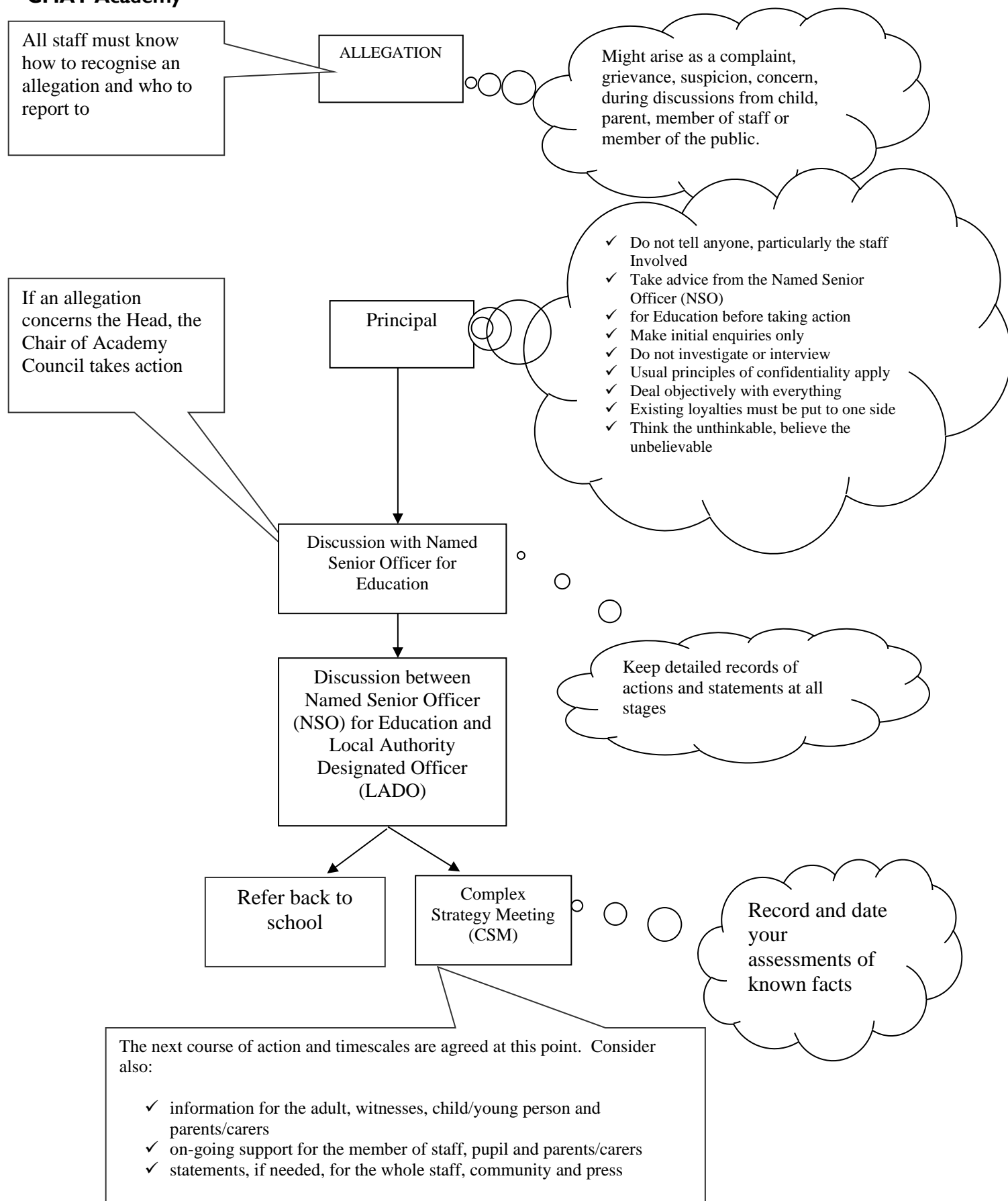
This may involve:

- physical contact including assault by penetration (e.g. rape or oral sex)
- non-penetrative acts such as masturbation, kissing, rubbing and touching outside of clothing
- non-contact activities involving:
 - children in looking at, or in the production of, sexual images,

- children in watching sexual activities
- or encouraging children to behave in sexually inappropriate ways
- grooming a child in preparation for abuse (including via the internet).

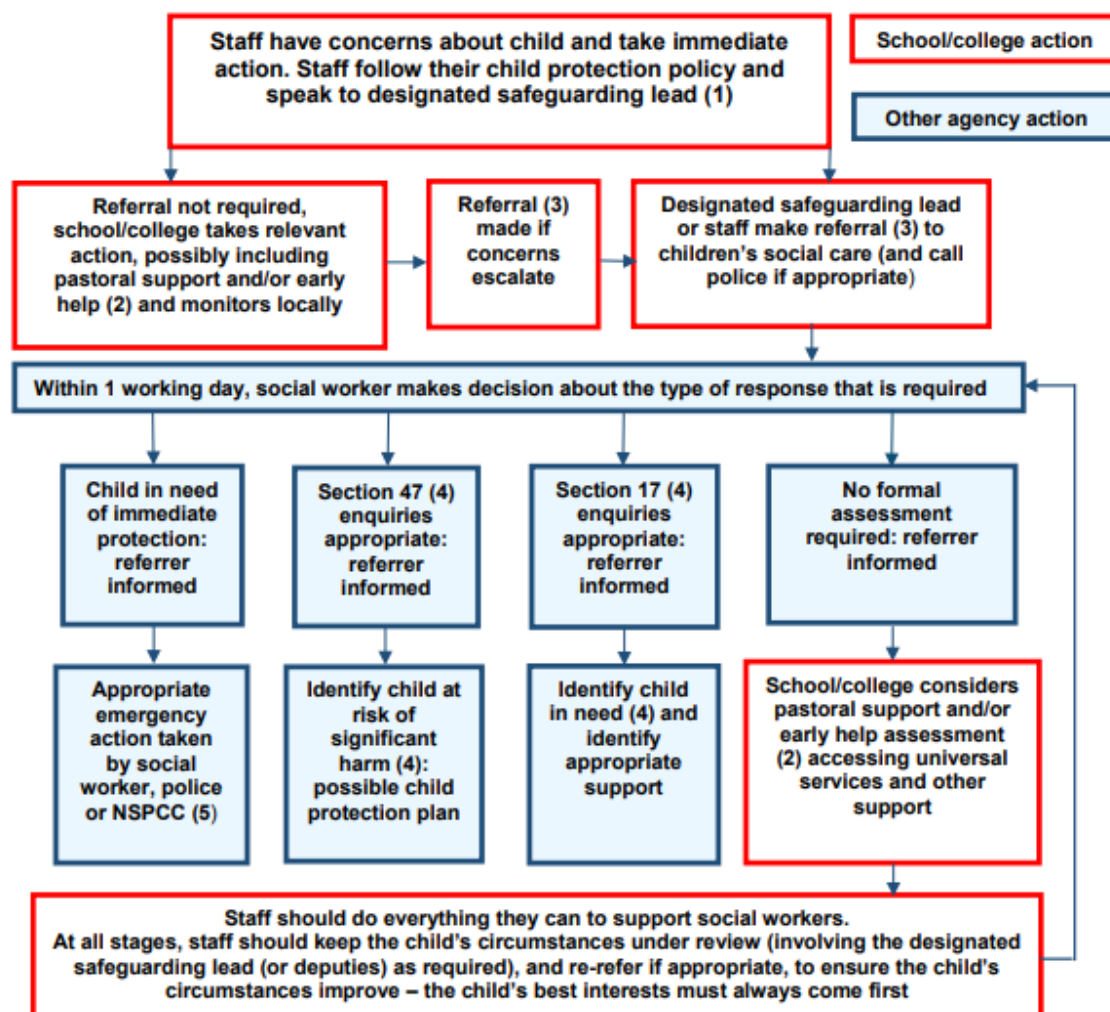
Sexual abuse is not solely perpetrated by adult males. Women can also commit acts of sexual abuse, as can other children.

Appendix B: Managing an Allegation Against a Member of Staff, Supply Staff or Volunteer in a CMAT Academy



Appendix C: Actions where there are concerns about a child

Reference KCSiE September 2020



(1) In cases which also involve a concern or an allegation of abuse against a staff member, see Part Four of this guidance.

(2) Early help means providing support as soon as a problem emerges at any point in a child's life. Where a child would benefit from co-ordinated early help, an early help inter-agency assessment should be arranged. Chapter one of [Working Together to Safeguard Children](#) provides detailed guidance on the early help process.

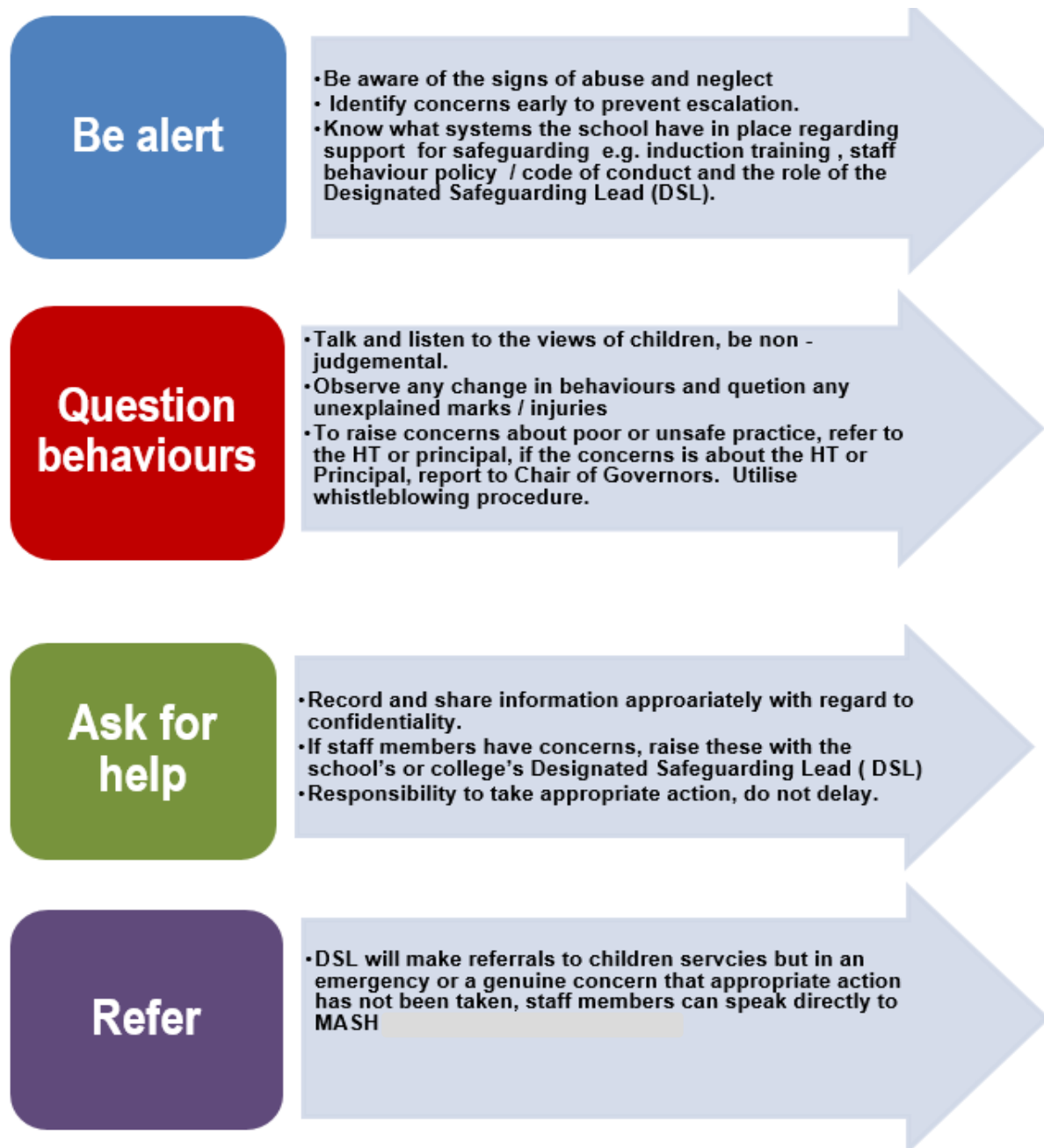
(3) Referrals should follow the process set out in the local threshold document and local protocol for assessment. Chapter one of [Working Together to Safeguard Children](#).

(4) Under the Children Act 1989, local authorities are required to provide services for children in need for the purposes of safeguarding and promoting their welfare. Children in need may be assessed under section 17 of the Children Act 1989. Under section 47 of the Children Act 1989, where a local authority has reasonable cause to suspect that a child is suffering or likely to suffer significant harm, it has a duty to make enquiries to decide whether to take action to safeguard or promote the child's welfare. Full details are in Chapter one of [Working Together to Safeguard Children](#).

(5) This could include applying for an Emergency Protection Order (EPO).

Appendix D: What to do if you are worried a child is being abused: Advice for Practitioners

Reference DfE 2019



Appendix E: Useful Contacts

Cambridgeshire and Peterborough

	Name	Telephone contact	Email
Contact Centre - Cambs	Customer Service	0345 045 5203	ECPS.General@cambridgeshire.gov.uk
Contact Centre – P'boro	Customer Service	01733 864180	ECPS.General@cambridgeshire.gov.uk
Out of hours Emergency Duty Team	Duty Social worker	01733 234724	
Police	Child Abuse Investigation Unit	01480 847743 or 101/999 (in an emergency)	
Education Safeguarding Manager (Cambs)	Sara Rogers Early Help Hun	Tel: 01480 376666	sara.rogers@cambridgeshire.gov.uk
Education Safeguarding Manager (P'boro)	Sue Proffitt Early Help Hub	01733 863649	susan.proffitt@peterborough.gov.uk
Cambridgeshire and Peterborough Safeguarding Children Partnership Board – Safeguarding Inter-Agency Procedures		0345 045 1362	http://www.safeguardingcambspeterborough.org.uk/children-board/
Education Safeguarding Team			ECPSGeneral@cambridgeshire.gov.uk
Local Authority Designated Officer LADO - Cambs		01223 727967	LADO@cambridgeshire.gov.uk
Local Authority Designated Officer LADO – P'boro	Gisela Jarman Jane Bellamy	01733 864038 01733 864790	
Senior Education Advisor	Phil Nash	01223 699448	

Cambridgeshire Local Safeguarding Children Board – Safeguarding Inter-Agency Procedures:

<https://www.cambslscb.co.uk/>

Lincolnshire

	Name	Telephone contact	Email
Contact Centre	Lincolnshire CSC	01522 782111	www.lincolnshire.gov.uk/scb
Out of hours	Emergency Duty Team (EDT)	01522 782333	lscb@lincolnshire.gov.uk
Police	Police (Child Abuse Investigation Unit)	101 or 999 (in an emergency)	
Early Help helpline	TAC Administration Team	01522 555826	tacadmin@lincolnshire.gcsx.gov.uk
Lincolnshire Local Authority Designated Officer (LADO)	Rachel Powis Jemma Parkinson	01522 554674	LSCP_LADO@lincolnshire.gov.uk
LCC Safeguarding in Schools:	Safeguarding & Education Welfare Supervisors: Ruth Fox Miriam Shucksmith	01522 554695	safeguardingschools@lincolnshire.gov.uk
Head of Virtual School LAC Lincolnshire	Kieran Barnes		Kieran.barnes@lincolnshire.gov.uk

Lincolnshire Local Safeguarding Children Board – Safeguarding Inter-Agency Procedures:

www.lincolnshire.gov.uk/lscb

Northamptonshire

	Name	Telephone contact	Email
Multi-Agency Safeguarding Hub (MASH):		0300 126 1000 (Option 1)	MASH@northamptonshire.gcsx.gov.uk On line referral form

			http://www.northamptonshirescb.org.uk/more/borough-and-district-councils/how-to-make-an-online-referral/ http://www.northamptonshire-safeguarding-children-board/who-is-who/designated-officer/
Out of hours	Emergency Duty Team (EDT) Police	01604 626938 999	

Northamptonshire Local Safeguarding Children Board

<http://www.northamptonshirescb.org.uk/>

Central Bedfordshire

	Name	Telephone contact	Email
Access & Referral Hub	Central Bedfordshire	0300 300 8585	cs.accessandreferral@centralbedfordshire.gov.uk
Out of hours	Emergency Duty Team (EDT)	0300 300 8123	cs.accessandreferral@centralbedfordshire.gov.uk
Police	Police (Child Abuse Investigation Unit)	101 or 999 (in an emergency) 01234 846960	
Early Help helpline	Central Bedfordshire Early help team	0300 300 8585	earlyhelp@centralbedfordshire.gov.uk
Central Bedfordshire Local Authority Designated Officer (LADO)	Laura Park	0300 300 5026 0300 300 8142	lado@centralbedfordshire.gov.uk laura.park@centralbedfordshire.gov.uk
CBC Safeguarding in Schools:	Victoria Blackmore Education safeguarding lead Maggie Lloyd Assistant Education safeguarding lead	0300 300 6199 0300 300 5115	victoria.blackmore@centralbedfordshire.gov.uk maggie.lloyd@centralbedfordshire.gov.uk
Head of Virtual School LAC Bedfordshire	Jackie Edwards	0300 300 4678	virtualschoolhead@centralbedfordshire.gov.uk jackie.edwards@centralbedfordshire.gov.uk

Key Information – unique for each Academy

Primary Academies

Bar Hill Community Primary School	Name	Telephone contact	Email
Designated Safeguarding Lead	Charlotte Linden	01954 273305	clinden@barhillprimary.org
Deputy DSL	Lorna Collings	01954 273305	lcollings@barhillprimary.org
Designated Safeguarding Person	Kate Loombe	01954 273305	kloombe@barhillprimary.org
Safeguarding Academy Council member	Lajos Kalmar	01954 273305	lkalmar@barhillprimary.org
Single Point of Contact (SPOC) (prevent lead)	Charlotte Linden	01954 273305	clinden@barhillprimary.org
The following members of staff have undertaken Safer Recruitment training	Charlotte Linden	01954 273305	clinden@barhillprimary.org
	Lorna Collings	01954 273305	lcollings@barhillprimary.org
	Jayne Bacon	01954 273305	jbacon@barhillprimary.org

Bluecoat Primary School	Name	Telephone contact	Email
Designated Safeguarding Lead	Helen Magan	01780 764202	hmagan@bluecoatprimary.org
Deputy DSL	Lesley Pascoe	01780 764202	lpascoe@bluecoatprimary.org
Designated Safeguarding Person	Ben Bloor	01780 764202	bbloor@bluecoatprimary.org
Safeguarding Academy Council member	Jill Haigh	01780 764202	jhaigh@cmatrust.net
Single Point of Contact (SPOC) (prevent lead)	Helen Magan	01780 764202	hmagan@bluecoatprimary.org
The following members of staff have undertaken Safer Recruitment training	Ben Bloor	01780 764202	bbloor@bluecoatprimary.org

Downham Feoffees primary School	Name	Telephone contact	Email
Designated Safeguarding Lead	Susan Jaques	01353 699325	sjaques@downhamfeoffees.org
Deputy DSL	Julia Stead	01353 699325	jstead@downhamfeoffees.org
Designated Safeguarding Person	Rebecca Dear	01353 699325	SENCO@downhamfeoffees.org
	Karen Monks	01353 699325	kmonks@downhamfeoffees.org
Safeguarding Academy Council member	Eleanor Port-Burke	01353 699325	EPort-Burke@cmatrust.net
Single Point of Contact (SPOC) (prevent lead)	Susan Jaques	01353 699325	sjaques@downhamfeoffees.org
The following members of staff have undertaken Safer Recruitment training	Susan Jaques	01353 699325	sjaques@downhamfeoffees.org
	Jo Dyer	01353 699325	jdyer@downhamfeoffees.org
	Eleanor Port-Burke	01353 699325	EPort-Burke@cmatrust.net

Great Ouse Primary School	Name	Telephone contact	Email
Designated Safeguarding Lead	Paul Ives	01234 907890	pives@greatouse.beds.sch.uk
Deputy DSL	Suzanne Sharpe	01234 907890	ssharpe@greatouse.beds.sch.uk
Designated Safeguarding Person	Chris Payne	01234 907890	cpayne@greatouse.beds.sch.uk
Safeguarding Academy Council member	Ashni Rhys-Tyler	01234 907890	admin@greatouse.beds.sch.uk
Single Point of Contact (SPOC) (prevent lead)	Suzanne Sharpe	01234 907890	ssharpe@greatouse.beds.sch.uk
The following members of staff have undertaken Safer Recruitment training	Paul Ives	01234 907890	pives@greatouse.beds.sch.uk
	Chris Payne	01234 907890	cpayne@greatouse.beds.sch.uk

Harrold Primary School	Name	Telephone contact	Email
Designated Safeguarding Lead	Sharon White/ Debonair Brown	01234 720346	swhite@harrold.beds.sch.uk dbrown@harrold.beds.sch.uk
Deputy DSL	Sharon White	01234 720346	swhite@harrold.beds.sch.uk
Safeguarding Academy Council member			
Single Point of Contact (SPOC) (prevent lead)	Debonair Brown	01234 720346	dbrown@harrold.beds.sch.uk
The following members of staff have undertaken Safer Recruitment training	Sharon White	01234 720346	swhite@harrold.beds.sch.uk
	Debonair Brown	01234 720346	dbrown@harrold.beds.sch.uk

Lantern Primary Academy	Name	Telephone contact	Email
Designated Safeguarding Lead	Jo Clarke	01353 664174	jclarke@lanternprimary.org
Deputy DSL	David Lawrence	01353 664174	dlawrence@lanternprimary.org
Designated Safeguarding Person	Karen Monks	01353 664174	kmonks@lanternprimary.org
	Nicki Crabtree	01353 664174	ncrabtree@lanternprimary.org
	Benita Sherrington	01353 664174	bsherrington@lanternprimary.org
Safeguarding Academy Council member	Becky Frewin	01353 664174	bfrewin@lanternprimary.org
Single Point of Contact (SPOC) (prevent lead)	David Lawrence	01353 664174	dlawrence@lanternprimary.org
The following members of staff have undertaken Safer Recruitment training	Jo Clarke	01353 664174	jclarke@lanternprimary.org
	David Lawrence	01353 664174	dlawrence@lanternprimary.org
	Nichole Francis	01353 664174	nfrancis@lanternprimary.org
	Benita Sherrington	01353 664174	bsherrington@lanternprimary.org

Oakley Primary School	Name	Telephone contact	Email
Designated Safeguarding Lead	Sarah Litchfield	01234 822104	slitchfield@oakley.beds.sch.uk
Deputy DSL	Dawn Hulatt	01234 822104	DHulatt@oakley.beds.sch.uk
Designated Safeguarding Person	Julie Atherton	01234 822104	JAtherton@oakley.beds.sch.uk
Safeguarding Academy Council member	currently awaiting appointment	01234 822104	
Single Point of Contact (SPOC) (prevent lead)	Sarah Litchfield	01234 822104	slitchfield@oakley.beds.sch.uk
The following members of staff have undertaken Safer Recruitment training	Sarah Litchfield	01234 822104	slitchfield@oakley.beds.sch.uk
	Julie Atherton	01234 822104	JAtherton@oakley.beds.sch.uk

Sawtry Junior Academy	Name	Telephone contact	Email
Designated Safeguarding Lead	Sarah Flack	01487 830204	sflack@sawtryjunior.org
Deputy DSL	Rebecca Dear	01487 830204	rdear@sawtryjunior.org
Designated Safeguarding Person	Emily Warren	01487 830204	ewarren@sawtryjunior.org
	Nicola McAvoy	01487 830204	Nmcavoy@sawtryjunior.org
	Julian Goodrum	01487 830204	jgoodrum@sawtryjunior.org
Safeguarding Academy Council member	Natalie Gadsby	01487 830204	ngapdsby@sawtryjunior.org
Single Point of Contact (SPOC) (prevent lead)	Sarah Flack	01487 830204	sflack@sawtryjunior.org
The following members of staff have undertaken Safer Recruitment training	Sarah Flack	01487 830204	sflack@sawtryjunior.org
	Rebecca Dear	01487 830204	rdear@sawtryjunior.org
	Amy Rone	01487 830204	arone@sawtryjunior.org

West Town Primary Academy	Name	Telephone contact	Email
Designated Safeguarding Lead	Leila Nightingale	01733 852400	lnightingale@westtownprimary.org
Deputy DSL	Hannah Quinn	01733 852400	hquinn@westtownprimary.org
Designated Safeguarding Person	Sarah Baxter	01733 852400	sbaxter@westtownprimary.org
	Louise Pettman	01733 852400	lpettman@westtownprimary.org
	Melissa Steels	01733 852400	msteels@westtownprimary.org
Safeguarding Academy Council member	Rosemary Gil	01733 852400	rgil@cmatrust.net
Single Point of Contact (SPOC) (prevent lead)	Leila Nightingale	01733 852400	lnightingale@westtownprimary.org
The following members of staff have undertaken Safer Recruitment training	Hannah Quinn	01733 852400	hquinn@westtownprimary.org
	Sarah Baxter	01733 852400	sbaxter@westtownprimary.org
	Helen Buckley	01733 852400	hbuckley@westtownprimary.org

	Louise Pettman	01733 852400	lpettman@westtownprimary.org
--	----------------	--------------	------------------------------

Secondary Academies

Ely College	Name	Telephone contact	Email
Designated Safeguarding Lead	Lynn Riches	01353 652812	lriches@elycollege.co.uk
Deputy DSL	Rachael Mustill	01353 652805	rmustill@elycollege.co.uk
Designated Safeguarding Person	Claire Lucas	01353 652842	clucas@elycollege.co.uk
	Debbie Knott	01353 667763	dknott@elycollege.co.uk
	Stuart Patman	01353 652808	spatman@elycollege.co.uk
	Anita Lightfoot	01353 667763	alightfoot@elycollege.co.uk
	Georgina Garrett	01353 667763	ggarrett@elycollege.co.uk
Safeguarding Academy Council member	Dominic Fullman	01353 667763	DFullman@cmatrust.net
Single Point of Contact (SPOC) (prevent lead)	Lynn Riches	01353 652812	lriches@elycollege.co.uk
The following members of staff have undertaken Safer Recruitment training	Simon Warburton	01353 667763	swarburton@elycollege.co.uk
	Lee Mawby	01353 667763	lmawby@elycollege.co.uk
	Adam Steels	01353 667763	asteels@elycollege.co.uk
	Samantha Rayner	01353 667763	srayner@elycollege.co.uk
	Victoria Cutforth	01353 667763	vcutforth@elycollege.co.uk
	Max Grezio	01353 667763	mgrezio@elycollege.co.uk
	Rachael Mustill	01353 667763	rmustill@elycollege.co.uk
	Briony Pilling	01353 667763	bpilling@elycollege.co.uk
	KJ Norton Berry	01353 667763	kjnortonberry@elycollege.co.uk

Greater Peterborough UTC	Name	Telephone contact	Email
Designated Safeguarding Lead	Steve Coleby	01733 715950	scoleby@gputc.org
Deputy DSL	Emma Coleman	01733 715950	ecoleman@gputc.org
Designated Safeguarding Person	Katie Elias	01733 715950	keliass@gputc.org
Safeguarding Academy Council member	Lee Mawby	01353 667763	lmawby@elycollege.co.uk
Single Point of Contact (SPOC) (prevent lead)	Steve Coleby	01733 715950	scoleby@gputc.org
The following members of staff have undertaken Safer Recruitment training	David Bisley	01733 715950	dbisley@gputc.org
	Steve Coleby	01733 715950	scoleby@gputc.org
	Lynne Donaldson	01733 715950	ldonaldson@gputc.org
	Emma Coleman	01733 715950	ecoleman@gputc.org
	Laura Collings	01733 715950	lcollings@gputc.org
	Becky McKinnon	01733 715950	bmckinnon@gputc.org
	Mandy Nightingale	01733 715950	mnightingale@gputc.org
	Eileen Spain	01733 715950	espain@gputc.org

Lincroft Academy	Name	Telephone contact	Email
Designated Safeguarding Lead	Paul Reynolds/Andrew Hencken	01234 822147	preynolds@lincroft.beds.sch.uk ahencken@lincroft.beds.sch.uk
Deputy DSL	Cat Magee	01234 822147	cmagee@lincroft.beds.sch.uk
Designated Safeguarding Person	Ann Wilson	01234 822147	awilson@lincroft.beds.sch.uk
Safeguarding Academy Council member	Paul Reynolds	01234 822147	preynolds@lincroft.beds.sch.uk
Single Point of Contact (SPOC) (prevent lead)	Paul Reynolds	01234 822147	preynolds@lincroft.beds.sch.uk
The following members of staff have undertaken Safer Recruitment training	Andrew Hencken	01234 822147	ahencken@lincroft.beds.sch.uk
	Paul Reynolds	01234 822147	preynolds@lincroft.beds.sch.uk
	Emma Taylor	01234 822147	etaylor@lincroft.beds.sch.uk
	Cat Magee	01234 822147	cmagee@lincroft.beds.sch.uk
	Vanessa Quenault	01234 822147	vquenault@lincroft.beds.sch.uk

Nene Park Academy	Name	Telephone contact	Email
Designated Safeguarding Lead	Kevin Hartley	01733 368300	KHartley@neneparkacademy.org
Deputy DSL	Kelly Fardon	01733 368300	KFardon@neneparkacademy.org
Designated Safeguarding Person	Danielle Hooper	01733 368300	Dhooper@neneparkacademy.org
	Rob Grover	01733 368300	RGrover@neneparkacademy.org
Safeguarding Academy Council member	Eddie Woods		Ewoods@cmatrust.net
Single Point of Contact (SPOC) (prevent lead)	Kevin Hartley	01733 368300	Khartley@neneparkacademy.org
The following members of staff have undertaken Safer Recruitment training	Sara Foster	01733 368300	sfoster@neneparkacademy.org
	Rob Grover	01733 368300	RGrover@neneparkacademy.org
	Sarah Pattison	01733 368300	spattison1@neneparkacademy.org
	Michelle Petersen	01733 368300	mpetersen@neneparkacademy.org
	Mark Pearson	01733 368300	mpearson@neneparkacademy.org
	Karen Martyn	01733 368300	kemartyn@neneparkacademy.org
	Lynsey Mason	01733 368300	lmason@neneparkacademy.org
	Ed Power	01733 368300	epower@neneparkacademy.org

North Cambridge Academy	Name	Telephone contact	Email
Designated Safeguarding Lead	Sam Fox	01223 491520	sfox@northcambridgeacademy.org
Deputy DSL	Jan Collings	01223 491518	jcollings@northcambridgeacademy.org
Designated Safeguarding Person	Mim Gosling	01223 491500	mgosling@northcambridgeacademy.org
	Anton Delgado Rosas	01223 491500	arosas@northcambridgeacademy.org
	Louise Vacca	01223 491500	lvacca@northcambridgeacademy.org
	Elizabeth Hedges	01223 491500	ehedges@northcambridgeacademy.org
	Laureen Hodge	01223 491500	lhodge@northcambridgeacademy.org
Safeguarding Academy Council member	Rachael Greenlees	01223 491500	RGreenlees@cmatrust.net

Single Point of Contact (SPOC) (prevent lead)	Jan Collings	01223 491518	jcollings@northcambridgeacademy.org
The following members of staff have undertaken Safer Recruitment training	Sam Fox	01223 491520	sfox@northcambridgeacademy.org
	Jo Tate	01223 491500	jtate@northcambridgeacademy.org
	Ali Gallagher	01223 491530	agallagher@northcambridgeacademy.org
	Elizabeth Hedges	01223 491500	ehedges@northcambridgeacademy.org
	Jairo Marin	01223 491500	jmarin@northcambridgeacademy.org
	George Leland	01223 491500	gleland@northcambridgeacademy.org

Northstowe Secondary College	Name	Telephone contact	Email
Designated Safeguarding Lead	Simon Russell	01223 343800	SRussell@Northstowesc.org
Deputy DSL	Sarah Morrison	01223 343800	SMorrison@Northstowesc.org
Designated Safeguarding Person	Carole Moss	01223 343800	CMoss@Northstowesc.org
	Caroline Cook	01223 343800	CCook@Northstowesc.org
	Ben Stone	01223 343800	BStone@Northstowesc.org
	Carl Deighton (from October 2021)	01223 343800	CDeighton@Northstowesc.org
	Clare Wadd	01223 343800	CWadd@Northstowesc.org
Safeguarding Academy Council member	Mary Rayner	01223 340800	MRayner@cmatrust.net
Single Point of Contact (SPOC) (prevent lead)	Sarah Morrison	01223 343800	SMorrison@Northstowesc.org
The following members of staff have undertaken Safer Recruitment training	Carole Moss	01223 343800	CMoss@Northstowesc.org
	Laura Maguire	01223 343800	LMaguire@Northstowesc.org

Sawtry Village Academy	Name	Telephone contact	Email
Designated Safeguarding Lead	Neil Wilson	01487 830701	nwilson@sawtryva.org
Deputy DSL	Jo Harvey	01487 830701	jharvey@sawtryva.org
Designated Safeguarding Person	Simon Parsons	01487 830701	sparsons@sawtryva.org
Safeguarding Academy Council member	Kim Graves	01487 830701	kgraves@cmatrust.net
Single Point of Contact (SPOC) (prevent lead)	Neil Wilson	01487 830701	nwilson@sawtryva.org
The following members of staff have undertaken Safer Recruitment training	Simon Parsons	01487 830701	sparsons@sawtryva.org
	Keith Hicks	01487 830701	khicks@sawtryva.org
	David Bridgeman	01487 830701	dbridgeman@sawtryva.org
	Ashley Yeomans	01487 830701	ayeomans@sawtryva.org
	Amanda Jarvis	01487 833867	ajarvis@sawtryva.org
	Joanne Scott	01487 830701	jscott@sawtryva.org

Sharnbrook Academy	Name	Telephone contact	Email
Designated Safeguarding Lead	Javier Sanchez	01234 782211	jsanchez@sharnbrook.beds.sch.uk

Deputy DSL	Jayne Luya	01234 782211	jluya@sharnbrook.beds.sch.uk
Designated Safeguarding Person	Hannah Just	01234 782211	hjust@sharnbrook.beds.sch.uk
Safeguarding Academy Council member	Bob Clayton	01234 782211	
Single Point of Contact (SPOC) (prevent lead)	Javier Sanchez	01234 782211	jsanchez@sharnbrook.beds.sch.uk
The following members of staff have undertaken Safer Recruitment training	Clare Raku	01234 782211	craku@sharnbrook.beds.sch.uk
	Sarah Brooks	01234 782211	sbrooks@sharnbrook.academy
	Karen Tunnicliff	01234 782211	ktunnicliff@sharnbrook.beds.sch.uk
	Javier Sanchez	01234 782211	jsanchez@sharnbrook.beds.sch.uk

Stamford Welland Academy	Name	Telephone contact	Email
Designated Safeguarding Lead	Tom Weller	01780 761000	tweller@stamfordwellandacademy.org
Deputy DSL			
Designated Safeguarding Person	Karen Mason	01780 761000	kmason@stamfordwellandacademy.org
	Vicky Lloyd	01780 761000	vlloyd@stamfordwellandacademy.org
Safeguarding Academy Council member	Alison Morgan	01780 761000	aMorgan@cmatrust.net
Single Point of Contact (SPOC) (prevent lead)	Tom weller	01780 761000	tweller@stamfordwellandacademy.org
The following members of staff have undertaken Safer Recruitment training	Vicky Lloyd	01780 761000	vlloyd@stamfordwellandacademy.org
	Tom Weller	01780 761000	tweller@stamfordwellandacademy.org
	Erica Appleton	01780 761000	eappleton@stamfordwellandacademy.org
	Julie Nolan	01780 761000	jnolan@stamfordwellandacademy.org
	Rebecca Hutson	01780 761000	rhutson@stamfordwellandacademy.org

Stratton Upper School	Name	Telephone contact	Email
Designated Safeguarding Lead	Richard Scoot	01767 220000	rscoot@stratton.school
Deputy DSL	Tom Laud (From 1st September)	01767 220000	tlaud@stratton.school
Designated Safeguarding Person	Hayley Grist	01767 220000	hgrist@stratton.school
	Suzi Hunstone	01767 220000	shunstone@stratton.school
	Rob Clarke	01767 220000	rclarke@stratton.school
	Carol Feeney	01767 220000	cfeeney@stratton.school
	Roz Hodges	01767 220000	rhodges@stratton.school
Safeguarding Academy Council member	Teri Taylor	01767 220000	teritaylor@cmatrust.net
Single Point of Contact (SPOC) (prevent lead)	Richard Scoot	01767 220000	rscoot@stratton.school
The following members of staff have undertaken Safer Recruitment training	Roz Hodges	01767 220000	rhodges@stratton.school
	Sandy Wood	01767 220000	swood@stratton.school
	Sarah Phillips	01767 220000	sphillips@stratton.school
	Sarah Vincent	01767 220000	svincent@stratton.school

	Zoe Smith	01767 220000	zsmith@stratton.school
	Nicola Richardson	01767 220000	nrichardson@stratton.school

Swavesey Village College	Name	Telephone contact	Email
Designated Safeguarding Lead	Hannah Turner	01954 234468	hturner@swaveseyvc.co.uk
Deputy DSL	Ali Williamson	01954 234468	awilliamson@swaveseyvc.co.uk
Designated Safeguarding Person	Chris Suckling	01954 230366	csuckling@swaveseyvc.co.uk
	Claire Mills	01954 230366	cmills@swaveseyvc.co.uk
	Maxine Wyatt	01954 230366	mwyatt@swaveseyvc.co.uk
	Georgina Curtis	01954 230366	gcurtis@swaveseyvc.co.uk
	Stuart Nunn	01954 230366	snunn@swaveseyvc.co.uk
Safeguarding Academy Council member	Claire Thorne	01954 230366	cthorne@cmatrust.net
Single Point of Contact (SPOC) (prevent lead)	Hannah Turner	01954 230366	hturner@swaveseyvc.co.uk
The following members of staff have undertaken Safer Recruitment training	Georgina Curtis	01954 230366	gcurtis@swaveseyvc.co.uk
	Stuart Nunn	01954 230366	snunn@swaveseyvc.co.uk
	Chris Suckling	01954 230366	csuckling@swaveseyvc.co.uk
	Jim Stavrou	01954 230366	jstavrou@swaveseyvc.co.uk
	Claire Mills	01954 230366	cmills@swaveseyvc.co.uk

The Ferrers School	Name	Telephone contact	Email
Designated Safeguarding Lead	Kerry York	01933 313411	kyork@theferrers.org
Deputy Designated Safeguarding Lead	Alice Orage	01933 313411	aorage@theferrers.org
Designated Safeguarding Person	Emma O'Dell Jenine Grover Matt Jackson Claire Fleming Emma Hirtsch Emma Austin Helen Prince	01933 313411	eodell@theferrers.org jgrover@theferrers.org mjackson@theferrers.org cfleming@theferrers.org ehirtsch@theferrers.org eaustin@theferrers.org hprince@theferrers.org
Safeguarding Academy Council member	Tony Hopkins	01933 313411	thopkins@cmatrust.net
Single Point of Contact (SPOC) (prevent lead)	Kerry York	01933 313411	kyork@theferrers.org
The following members of staff have undertaken Safer Recruitment training	Angela Smith Matthew Albinson Kerry York Tony Hopkins Alison Davies Jacqueline Brown	01933 313411	asmith@theferrers.org malbinson@theferrers.org kyork@theferrers.org thopkins@cmatrust.net adavies@theferrers.org jbrown@theferrers.org

Special Schools

The Harbour School	Name	Telephone contact	Email
Designated Safeguarding Lead	Tony Waller	01353 740229	twaller@theharbour.academy
Deputy DSL	Lise Sugden	01353 740229	lsugden@theharbour.academy
Designated Safeguarding Person	Claire Tayeg	01353 740229	ctayeg@theharbour.academy
Safeguarding Academy Council member	Prue Rayner	01353 740229	prayner@anglianlearning.org
Single Point of Contact (SPOC) (prevent lead)	Lise Sugden	01353 740229	lsugden@theharbour.academy
The following members of staff have undertaken Safer Recruitment training	Lise Sugden	01353 740229	lsugden@theharbour.academy
	Chloe Grimes	01353 740229	cgrimes@theharbour.academy

The Martin Bacon Academy	Name	Telephone contact	Email
Designated Safeguarding Lead	Kathy Bacon	01223 340770	KBacon1@Martinbacon.academy
Deputy DSL	Sarah Mephram	01223 340771	SMephram@martinbacon.academy
Designated Safeguarding Person	Sarah Louise	01223 340733	slouise@martinbacon.academy
	Charlie Blackman-Doyle	01223 340713	CBlackman-Doyle@Martinbacon.academy
	Evelyn Taylor	01223 340711	ETaylor@Martinbacon.academy
	Mary Rayner	01223 340733	mrayer@cmatrust.net
	Michelle Smith	01223 340734	msmith@martinbacon.academy
Safeguarding Academy Council member	Prue Rayner	01223 340800	PRayner@cmatrust.net
Single Point of Contact (SPOC) (prevent lead)	Sarah Mephram	01223 340771	SMephram@martinbacon.academy
The following members of staff have undertaken Safer Recruitment training	Sarah Louise	01223 340733	slouise@martinbacon.academy
	Mary Rayner	01223 340733	mrayer@cmatrust.net
	Sara Dimmick	01223 340800	sdimmick@martinbacon.academy